

STUDIO ARTHUR CASAS

ARCHITECTURE AND DESIGN

Brazil - São Paulo
Rua Itápolis, 818 - 01245 000
+ 55 11 2182 7500
+ 55 11 3663 6540

press@arthurcasas.com

FACTSHEET

Project	TM Apartment
Author	Arthur Casas
Team	Beto Cabariti, Alessandra Mattar, Miti Sameshima
Collaborator	Daniela Costa
Contractor	Udra
Suppliers	D'Orey (tiles), Laskasas (woodworking), João Lopes (light fixtures), QuartoSala (furniture)
Dates	2016-2020
Area	200m2
Location	Lisbon, Portugal
Photos	Filippo Bamberghi

ABOUT

With a panoramic view to Tejo River, TM apartment is on the penthouse of a retrofit building in the heart of Lisbon. The project's layout reflects the wishes of clients - a couple -, for cozy spaces to receive friends, but also to respect their privacy. Thus, the project is split into two hemispheres, starting from the social hall. On one side, the southern portion, it's where all the social life takes place - living room, bar, dining room and kitchen; on the other, the northern portion, it's where the intimate areas are concentrated.

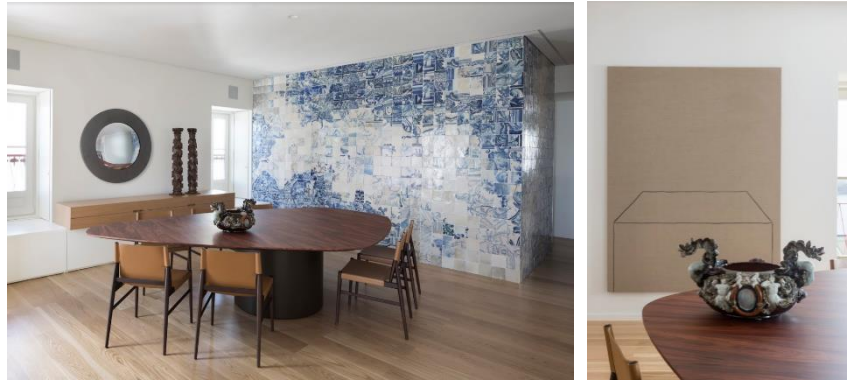
Once you enter the apartment, the Portuguese tiles panel in the dining room announces the blue protagonism, a striking color in the project - also present in the Delfino armchairs and Carolina Semiatz's painting. Also central in this environment, the Amorfa dining table, designed by Arthur Casas, is inspired by organic forms of nature and escapes from the conventional pattern, with a dynamic design to bring its users closer. Finally, the convex mirror, by Studio Básico, amplifies and visually integrates the social areas.

The project also features neutral tones and wood finishings - present on the floor, woodwork, furniture and decoration - to balance the color palette and harmonize with the landscape. Other highlights in the social area are Julião Sarmiento's "All the different shades of off-white found in the studio at this time" on the living room's

main wall, the vintage coffee table and ceramics, the table lamp from Paris Flea Market and the table center piece by the Portuguese ceramicist Bordallo Pinheiro.

The private area, with three suites, follows the same color palette of neutral and earthy tones and also features generous windows, creating comfortable environments, well served by natural lighting and ventilation. Carrara Mate marble tiled bathrooms harmoniously articulate with the bedrooms.

INTERIORES



Amorfa Jumbo table, Arthur Casas Design, Studio Objeto; **Voyage chair**, Porro, QuartoSala; **convex mirror**, por Arthur Casas, Studio Básico; **portuguese tiles**, D'Orey; **ceramic table center piece**, Bordallo Pinheiro; **custom sideboard**, Studio Arthur Casas; *"Plinto" (2013)*, by Pedro Barateiro.



Groundpiece Sofa, Flexform, QuartoSala; **Rio coffee table**, Cassina, QuartoSala; **Delfino armchair**, Arflex, QuartoSala; **Chieftain armchair**, Finn Juhl, Casual Móveis; *"All the different shades of off-white found in the studio at this time" (2018)*, Julião Sarmiento; **vintage side table**, bought in Lisbon; **vintage table lamp**, bought in Paris; **ceramics**, bought in Paris; *Untitled (2019)*, by Carolina Semiatzh.



Jupiter bar stool, Borje Johanson, QuartoSala; **Una Vintage wall pendant**, Florian Schulz, 1STDIBS; **irregular bottles**, bought in Lisbon.



Cuff Open bed, Bonaldo, QuartoSala; **Nepal armchair (White Mongolia)**, Baxter, QuartoSala; **Tupi side table**, Arthur Casas Design, Etel; **Mantis BS3 Table Lamp**, DCW; **Pol Chambost table lamp**, bought in Paris; **Untitled (1989)**, Guther Forg.